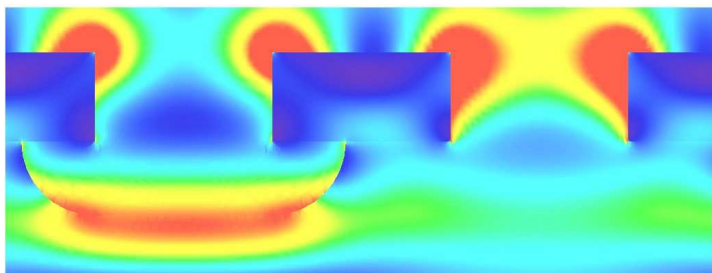
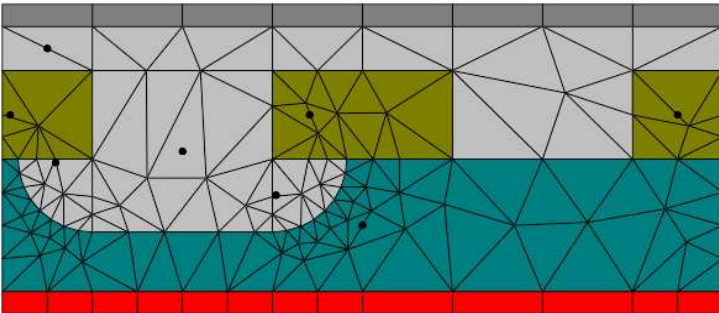
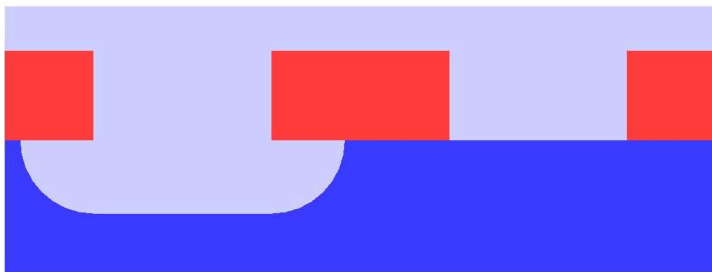
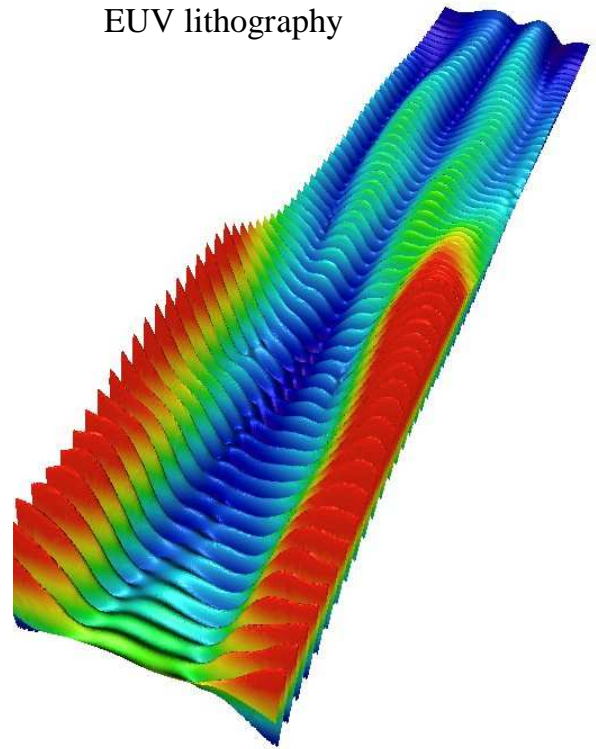


JCMsuite - Adaptive Finite Element Package for Lithography Simulations

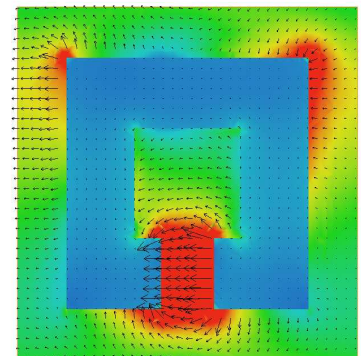
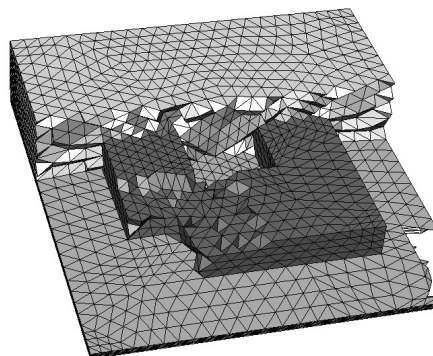


DUV Phasemask,
undercut

EUV lithography



Metamaterial



Full Maxwell's Equations

- Smooth and abrupt refractive index changes
- Multiscale structures in 1D, 2D and 3D
- High refractive index-contrast structures
- Photonic crystals
- Polarisation effects, gain and loss

Adaptive Finite Elements

- Predefined calculation accuracy
- Automatic mesh refinement
- Fast and robust multi-grid algorithms

Well Defined Interfaces / Plugins for Scripting Languages

JCMmode

- (Leaky) Propagating modes in optical waveguides
- Bloch-type modes in Photonic Crystals
- Cavity modes / VCSEL

JCMharmony

- Light scattering off arbitrarily shaped obstacles
- Transmission, reflection, polarization analysis
- Photolithography/EUV